



Leading the way in providing specialty acoustic solutions

Contents

Introduction	2
Shadow Linea Acoustic Panels	3
Silhouette Acoustic Panels	4
Stealth Acoustic Panels	5
Substrates & Finishes	6
Green Attributes	6
Z Fix Concealed Fixing System	7
Specifications	7

Introduction

ARROW INDUSTRIES IS AN ENTIRELY AMERICAN OWNED AND OPERATED COMPANY. A MARKET LEADER IN THE DESIGN AND MANUFACTURING OF ACOUSTIC PRODUCTS, SPECIALIZING IN NEW AND INSPIRATIONAL SOLUTIONS TO VISUAL, SOUND, AND LIGHT REQUIREMENTS.

COMBINING CREATIVE FLAIR WITH MANUFACTURING EXPERTISE, ARROW INDUSTRIES TECHNOLOGICALLY ADVANCED MANUFACTURING FACILITY HAS THE ABILITY TO PROCESS LARGE PROJECTS EFFICIENTLY.

HIGHLY QUALIFIED CONSULTANTS ARE COMMITTED TO ASSISTING WITH DESIGN REQUIREMENTS FROM CONCEPT TO COMPLETION, PROVIDING CUSTOMIZED PRODUCTS AND SYSTEMS TO MEET SPECIFIC PROJECT NEEDS.

Applications

- Church Auditoriums & Chapels
- Sports Centers, Gymnasiums & Aquatic Centers
- Multipurpose Halls & Meeting Rooms
- Community Centers, Libraries & Galleries
- Performing Arts Centers
- Courthouses & Police Stations
- Lecture Theaters & Boardrooms
- Music Rehearsal Rooms & Recording Studios
- Lobbies, Corridors, Atriums & Foyers
- Interior Fitouts & Refurbishments
- Airports & Train Stations
- Aged Care Facilities & Hospitals
- Shopping Centers & Arcades
- Food Courts & Restaurants
- Hotels, Motels, Clubs & Bars
- Function Centers & Call Centers



SHADOW LINEA))) ACOUSTIC PANELS

CONTEMPORARY AND TIMELESS, SHADOW LINEA PROVIDES A STREAMLINED LOOK WITH ITS ALMOST SEAMLESS LINES AND CONCEALED JOINS. IDEAL FOR WALLS AND CEILINGS THESE VERSATILE PANELS ARE EASY TO INSTALL AND CAN BE CURVED TO FOLLOW WALL OR CEILING CONTOURS.

FEATURES & BENEFITS

- Linea effect
- 2 Different patterns
- Panels can be curved
- Easy to install
- Concealed joins
- Light cutouts
- Access panels
- High impact resistance
- Concealed fixing system
- SoundSorb acoustic fabric
- Patterns customizable
- High sound absorption
- USA made

FINISHES

- Veneers, Natural & Reconstituted
- Duratec
- Duralam
- ClearKote
- Polyurethane - matte, satin, or gloss
- Low VOC

SUBSTRATES

- Plywood
- Standard MDF
- DesignPanel Fire Retardant
- MDF



SILHOUETTE))) ACOUSTIC PANELS

AVAILABLE IN A WIDE SELECTION OF PREFINISHED SURFACES GALAXY'S SILHOUETTE ACOUSTIC PANELS ARE A COST EFFECTIVE SOLUTION TO SOUND CONTROL.

FEATURES & BENEFITS

- High sound absorption
- Cost effective
- 4 Standard patterns
- Patterns customizable
- Panels can be curved
- Light cutouts
- Access panels
- High impact resistance
- Concealed fixing system
- Available as tiles
- SoundSorb acoustic fabric
- USA made

FINISHES

- Veneers, Natural & Reconstituted
- Duratec
- Duralam
- ClearKote
- Polyurethane - matte, satin, or gloss
- Low VOC

SUBSTRATES

- Plywood
- Standard MDF
- DesignPanel Fire Retardant
- MDF



STEALTH))) ACOUSTIC PANELS

HIGH SOUND ABSORPTION AND EASE OF CUSTOMIZATION MAKE STEALTH ACOUSTIC PANELS A STYLISH AND ATTRACTIVE ALTERNATIVE TO TRADITIONAL ROUND HOLE PERFORATIONS.

FEATURES & BENEFITS

- High sound absorption
- 3 Standard patterns
- Panels can be curved
- Light cutouts
- Access panels
- High impact resistance
- Concealed fixing system
- Available as tiles
- SoundSorb acoustic fabric
- Patterns customizable
- USA made

FINISHES

- Veneers, Natural & Reconstituted
- Duratec
- Duralam
- ClearKote
- Polyurethane - matte, satin, or gloss
- Low VOC

SUBSTRATES

- Plywood
- Standard MDF
- DesignPanel Fire Retardant
- MDF

Galaxy Substrates

STANDARD MDF

- Versatile substrate with high strength and durability.
- Manufactured from renewable plantation timber.

DESIGNPANEL FR MDF

- Fire Rated MDF that achieves a Class A fire rating.
- No added formaldehyde makes it essential for green star projects.

PREMIUM PLYWOOD

- Plywood with an A grade face that is free of imperfections.
- Natural timber product ideal for areas where the paneling is highly visible.

ECONOMY PLYWOOD

- Plywood with a B grade face that has minor imperfections and patches.
- Ideal for areas with restricted budgets that need acoustic treatment, and where looks are not so critical.

CLEARKOTE

- Clear satin lacquer that protects natural timber.
- WeatherKote is a clear lacquer suitable for exterior use.

POLYURETHANE – MATTE, SATIN OR GLOSS

- Offers endless possibilities of color that can be applied to all the products.
- Ideal for custom requirements and corporate colors.

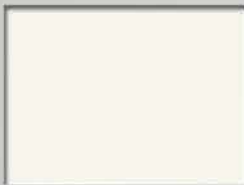
DURALAM

- Has high impact resistance and durability.
- Ideal for special effects with patterns and true metal finishes.

DURATEC FINISH ON MDF

- Tough durable laminate applied to MDF.
- Can be used with Designpanel FR substrate.
- Cost effective product that looks great with hardwearing properties.

Duratec Finishes



Snow White



Smooth Maple



Northern Oak



Oil Rubbed Cherry

Green Attributes

Biodegradability: Degrades over time as wood does. Finishes are low VOC, water based and degrade to inert constituents.

Low Emissions: Low VOC, zero added formaldehyde, with no detectable formaldehyde emission.

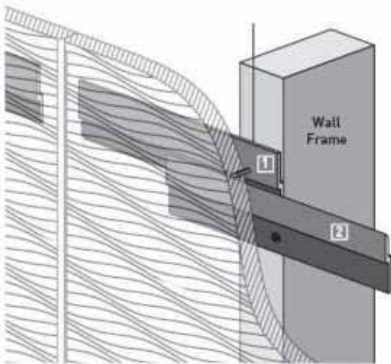
Global Impacts: Local sourcing of raw materials minimizes fuel consumption. LowVOC water-based finishes are applied during manufacturing.

Health & Safety: Low VOC with no detectable formaldehyde. If the product is field cut, appropriate precautions for wood dust should be observed. Products contain no urea formaldehyde resins.

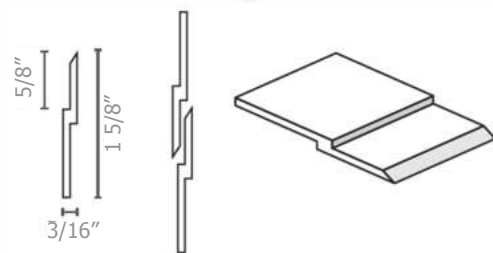


Z Fix Concealed Fixing System

The Aluminum "Z" bracket fixing system provides an economical concealed fix, wall panel mounting system using minimal space. (1/4 inch from the wall to the rear of the panel.) "Z" Brackets should be fixed with construction adhesive as well as an appropriate length screw onto the rear of the panel, and on to the wall to be fixed to. Allow time for adhesive to cure before proceeding any further. The brackets then "lock" together when the panel is dropped vertically as shown in the diagram.



Fixing Distances:
Panels should be fixed at least every 50 inches.



ALZF96X Aluminum "Z" bracket 96"

Specifications

Galaxy (design and pattern type) in (selected finish and substrate) complete with SoundSorb acoustic backing and Zfix concealed fixing system.

SAMPLE SPECIFICATION

Galaxy Acoustics Shadow Linea GL1S in Snow White Duratec MR MDF complete with SoundSorb acoustic backing and Zfix concealed fixing system.

Please contact Arrow Industries for all further technical data including acoustic test reports, fire test report, specification sheets, fixing systems, and samples.

Phone 855.872.6623



p 855-872-6623
e info@arrowindustries.net
w www.arrowindustries.net

Locations:

Minneapolis Minnesota 55306
Neché North Dakota 58265
San Antonio, Texas 78216

 **ACHIEVE YOUR TARGET**